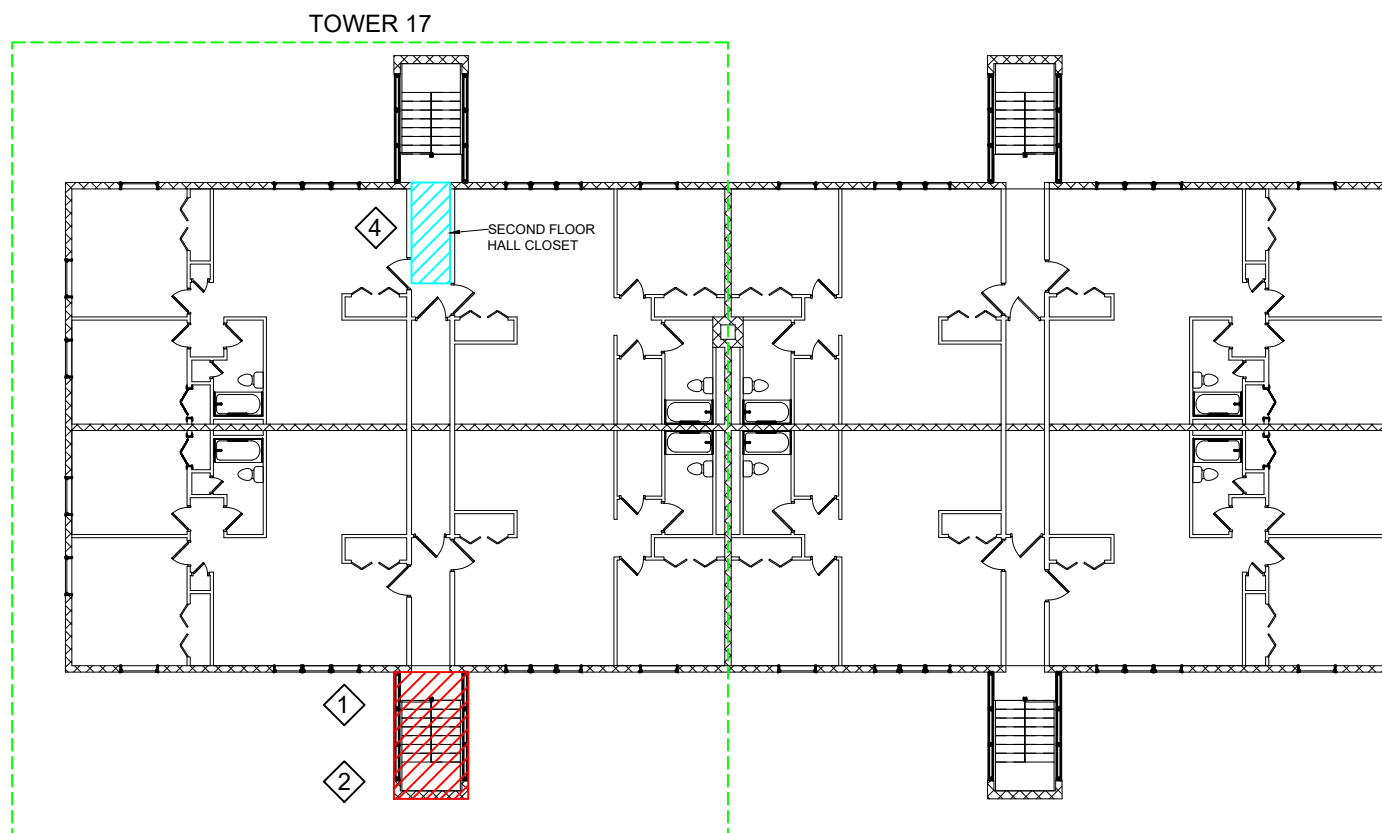


① FIRST FLOOR PLAN

SCALE: NTS



② SECOND FLOOR PLAN

SCALE: NTS

LEGEND

HATCHING

- AREA INVESTIGATED - ACM IDENTIFIED
- AREA INVESTIGATED - NO ACM IDENTIFIED
- TOWER AREA

MATERIALS

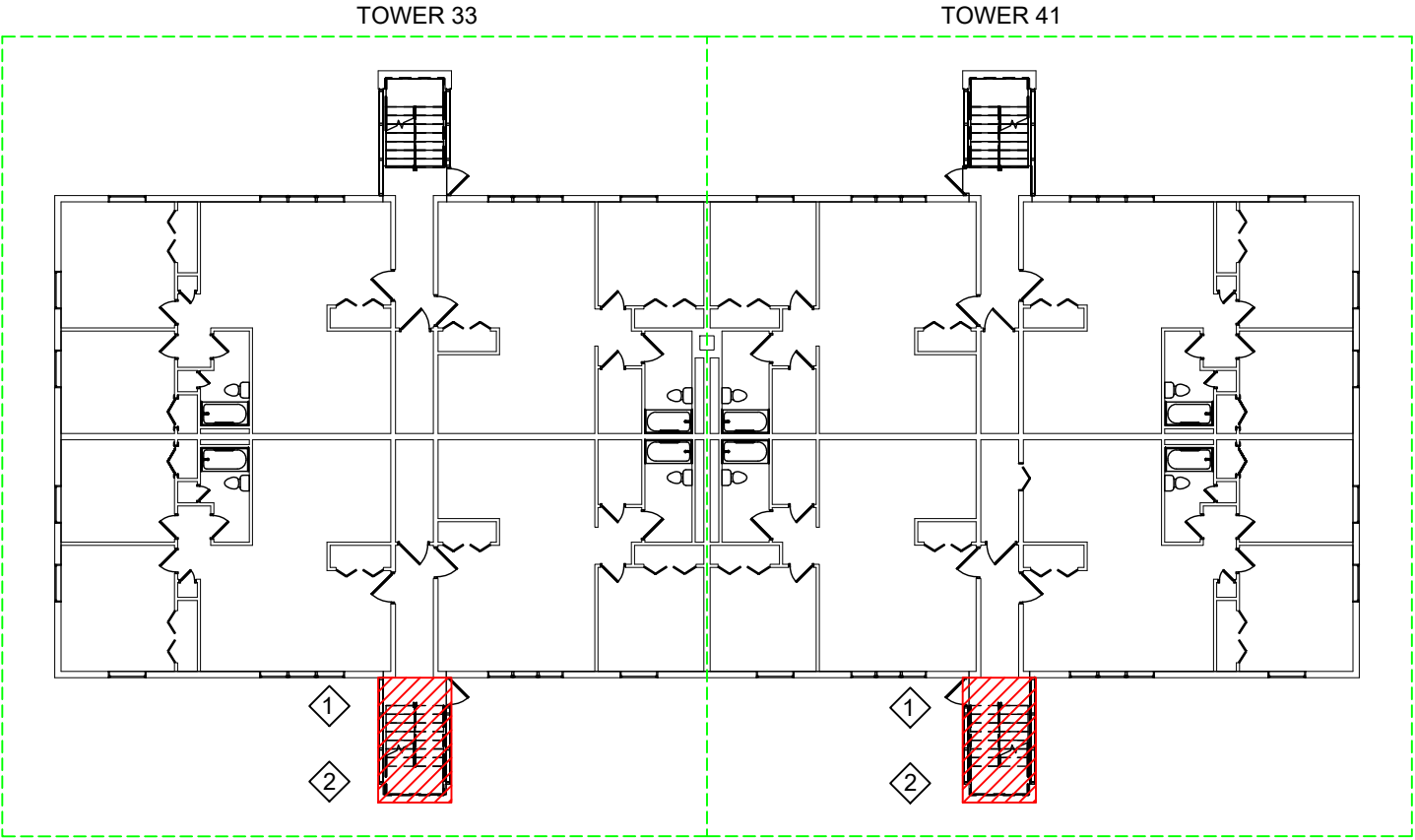
- 12"x12" FLOOR TILE (MARBLE PATTERN) - ACM
- MASTIC OF 12"x12" FLOOR TILE (MARBLE PATTERN) - ACM
- TEXTURED CEILING - ACM
- TEXTURED CEILING - NO ACM

GENERAL NOTES

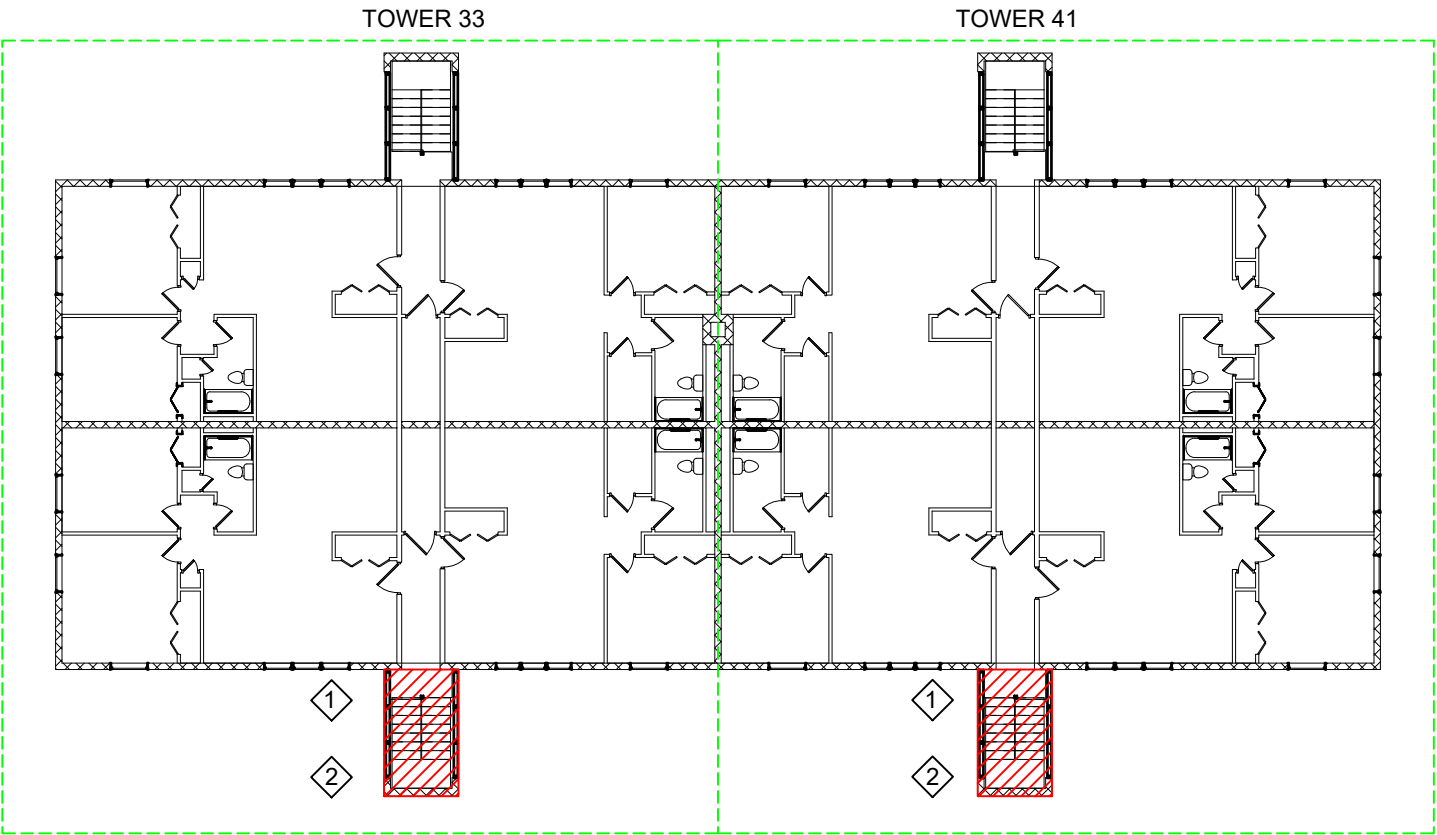
- THE FIRST INSPECTION WAS CONDUCTED ON OCTOBER 6, 2022, WHICH COVERED THE STAIRWELL IN BUILDING 2 TOWER 17.
- THE SECOND INSPECTION WAS CONDUCTED ON MAY 19, 2025, WHICH COVERED THE FIRST AND SECOND FLOOR CLOSETS IN BUILDING 2 TOWER 17.
- QUANTITIES NOTED IN THE STAIRWELL REFERENCE THE STAIRCASE BETWEEN THE FIRST AND SECOND FLOOR (I.E., NOT EXCLUSIVE TO A CERTAIN FLOOR).
- APPROXIMATELY 100 SQUARE FEET (SF) OF MATERIAL TYPE 1 WERE IDENTIFIED IN EACH STAIRWELL.
- APPROXIMATELY 100 SF OF MATERIAL TYPE 2 WERE IDENTIFIED IN EACH STAIRWELL.
- APPROXIMATELY 40 SF OF MATERIAL TYPE 3 WAS IDENTIFIED ON THE FIRST FLOOR GYPSUM CLOSET CEILING. ASBESTOS TEXTURE TO BE REMOVED.
- NO ACM WAS NOTED ON THE SECOND FLOOR GYPSUM CLOSET CEILING.



Picture 1: Gypsum ceiling with textured ACM identified.



① FIRST FLOOR PLAN
SCALE: NTS



② SECOND FLOOR PLAN
SCALE: NTS

LEGEND

HATCHING

▨ AREA INVESTIGATED - ACM IDENTIFIED

▭ TOWER AREA

MATERIALS

◇ 12"x12" FLOOR TILE (MARBLE PATTERN) - ACM

◇ MASTIC OF 12"x12" FLOOR TILE (MARBLE PATTERN) - ACM

- GENERAL NOTES**
- A. THE INSPECTION WAS CONDUCTED ON OCTOBER 6, 2022, WHICH COVERED THE STAIRWELL IN BUILDING 3 TOWER 33 AND TOWER 41.
 - B. QUANTITIES NOTED IN THE STAIRWELL REFERENCE THE STAIRCASE BETWEEN THE FIRST AND SECOND FLOOR (I.E., NOT EXCLUSIVE TO A CERTAIN FLOOR).
 - C. APPROXIMATELY 100 SQUARE FEET (SF) OF MATERIAL TYPE 1 WERE IDENTIFIED IN EACH STAIRWELL.
 - D. APPROXIMATELY 100 SF OF MATERIAL TYPE 2 WERE IDENTIFIED IN EACH STAIRWELL.



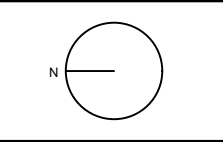
**BRYDGES
ENGINEERING**
IN ENVIRONMENT
AND ENERGY, DPC



AMD
ENVIRONMENTAL



ASBESTOS ABATEMENT PLAN
LEXINGTON COURT APARTMENTS
1289-1309 LEXINGTON AVE
ROCHESTER, NY 14606



DATE ISSUED:
June 20, 2025

**BUILDING
THREE PLAN
ACM-2**